



# Proportion-Based Pioneer Bonnet

## Small – Child

Emily B. Farrer

*I created this proportion-based pattern from a couple of other patterns so I wouldn't need a physical pattern. I don't know if its shape has any authenticity, but the finished product looks pretty close to other bonnets I've seen. I prefer bonnet patterns that have a separate neck piece, but this pattern is pretty simple as the neck piece is created from the actual bonnet piece.*

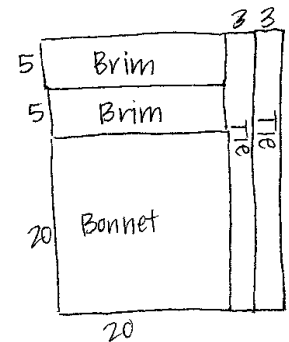


### Materials

1. Fabric: Up to a yard of 45" fabric
2. Elastic: 7 – 9" of 1/4"
3. Interfacing: equal size of one brim piece

### Sizing

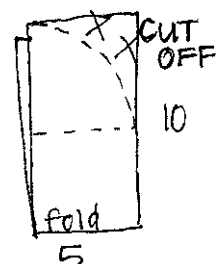
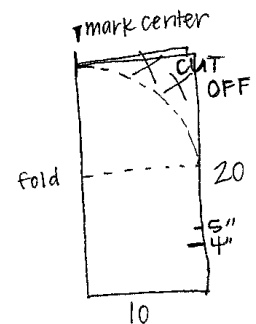
1. Cut a square of fabric. In this example, we'll make a small bonnet: 20" x 20".
2. For the brim depth, use 1/4 (or slightly less) the bonnet length plus the bonnet length for the length of the brim: 5" x 20".
3. For the ties, cut 2 strips 3" x 30". (Most ties for any size bonnet will be about this size, you could make them a little wider, 3 1/4", and pleat the end you sew into the bonnet, or make them a little narrower by sewing your seams a little deeper.)



- *For a baby doll a 9" starting square works well.*
- *For a little girl (3 year-old) with a 19" head, a 16" square works well.*
- *An 18" square would probably work for a young girl and a starting 22/24" square would probably work for an adult. I haven't actually tried all the sizes, but I'll update this document when I do.*

### Cutting

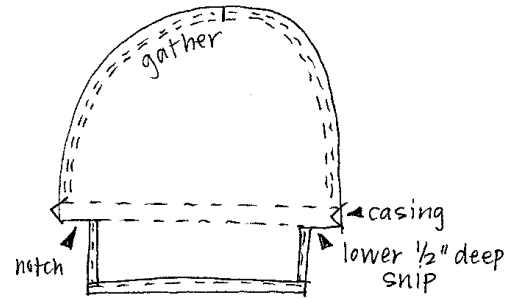
1. Fold the bonnet piece in half, and then in quarters (to make a 10" x 10" square). Press to mark a plus sign in the fabric. Unfold the fabric one time so it is still in half (see picture).
  - a. Cut a quarter circle off the top half of the folded fabric (see picture).
  - b. Cut a 1/2" deep mark 1/5 the way up from the bottom of the fabric: in this case, 4". Cut another small mark 1/4" deep 1" above the first mark (you will be folding the top mark down to meet the bottom mark to form casing for the elastic. You actually may need to cut 1 1/4" above the lower mark to create enough room for feeding your elastic – depending on how big your safety pin is.)
  - c. Mark the top center of the bonnet piece with either a pin or a 1/4" snip.



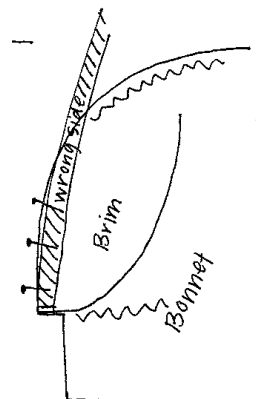
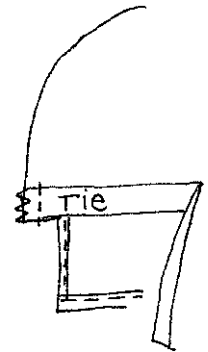
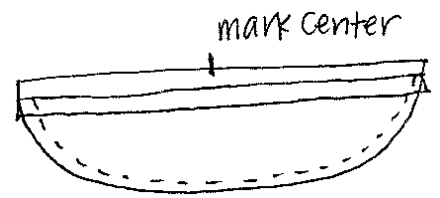
2. Take one brim piece and fold in half two times to end up with a 5" x 5" square. Press to create lines. Unfold once.
  - a. Cut a quarter circle off the top half. Cut the second brim piece to match.
  - b. Cut a piece of interfacing to match.

### Sewing

1. Below the bottom slit marks on both sides of the **bonnet**, fold the fabric in  $\frac{1}{4}$ ", then again  $\frac{1}{4}$ ". Press. Stitch.
  - a. Fold up the bottom edge  $\frac{1}{4}$ ", then again  $\frac{1}{4}$ " (or a little more if you desire). Press. Stitch.
  - b. To make casing, fold top slits down to meet bottom slits in a "Z" shaped fashion. Press. Stitch bottom and top of casing (leaving ends open).
  - c. Cut a 7" piece of elastic and feed through casing. Be sure and stitch ends down.
  - d. Run two rows of gathering stitches an inch up from notches (where lower slit originally was).



2. Take one **brim** piece and fuse or sew interfacing to wrong side.
  - a. Take other brim piece and fold straight edge  $\frac{1}{2}$ " to the back (wrong side). Press.
  - b. Stitch the two brim pieces right sides together along the curved edge with a  $\frac{1}{2}$ " seam. Trim to  $\frac{1}{4}$ ". Clip and notch curves. Turn. Press.
  - c. Mark with a  $\frac{1}{4}$ " deep clip the center of the straight edge of the brim (or use a pin).
3. Fold **ties** in half lengthwise. Stitch a  $\frac{1}{2}$ " seam from one short edge then across the long edge, leaving one small end open for turning. Clip corner. Turn. Press.
  - a. Baste ties to inside (wrong side) of bonnet by matching small, open end to notched corner (on top of casing, not below it).
4. Gather bonnet just above ties all the way around.
5. Pin straight edge of brim (unfolded piece) to bonnet, right sides together matching centers and brim ends with notched ends of bonnet. Baste with a  $\frac{1}{2}$  inch seam, being careful not to catch the second piece of brim (the one that was turned  $\frac{1}{2}$ " down). Stitch,  $\frac{1}{2}$ ".
6. Turn bonnet inside out and hand stitch folded brim piece to inside of bonnet to finish, making sure unfinished edge is tucked inside the brim.



Please e-mail me with suggestions! [Emily.farrer@gmail.com](mailto:Emily.farrer@gmail.com)